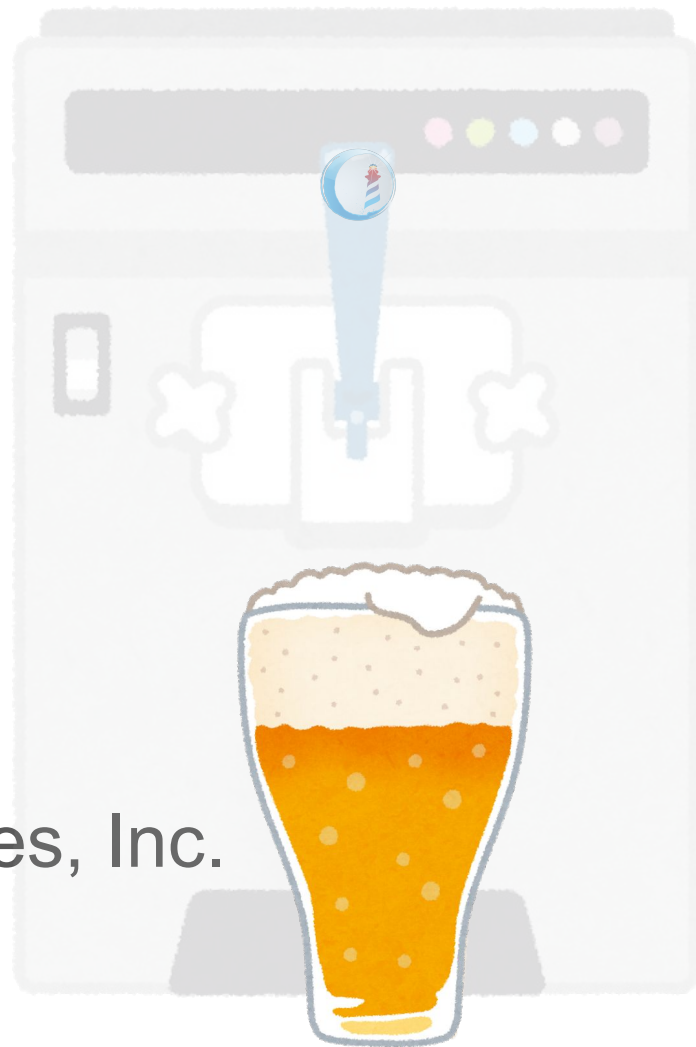


PintGlas

fresh Pharo on tap

Tomohiro Oda

Software Research Associates, Inc.

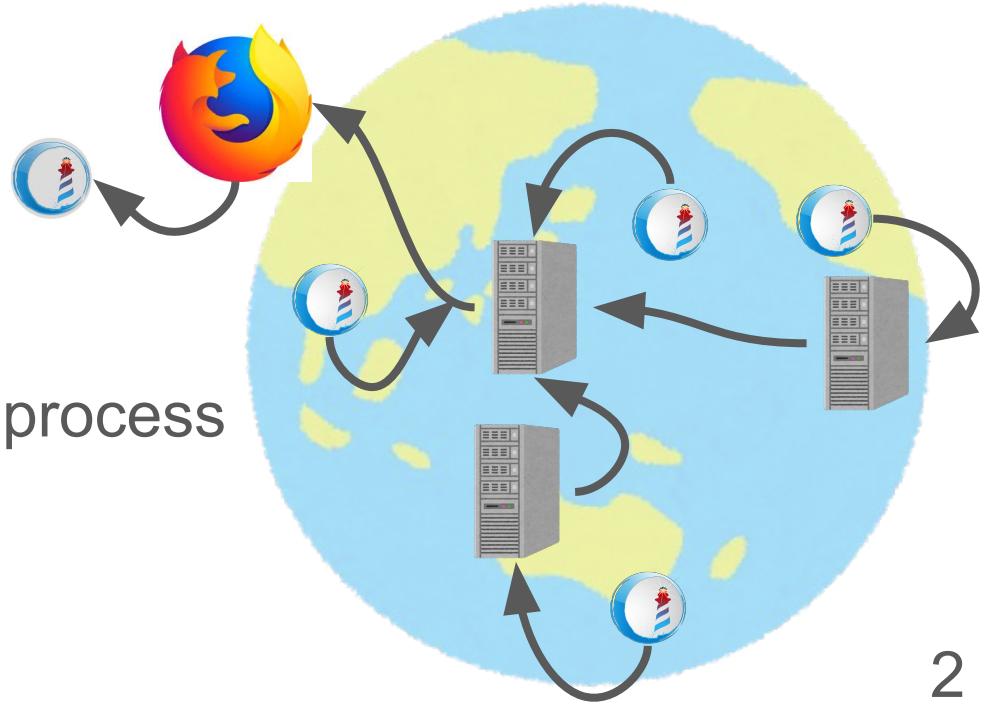


PintGlas

= **Pharo Image Network Transfer - G**lobal **A**ccess **S**ervice

PintGlas system

takes, manages and deliver
snapshots of remote Pharo process
by live requests



Agenda

1. background
2. design
3. demo
4. todos & summary

background

2. background

challenges in scientific computing (e.g. multi-agent simulations)

- exploratory
 - write once, run once
 - no detailed plan, no systematic testing
 - hard to estimate computing time
- diverse architecture
 - supercomputers to laptops
 - trade-offs between FLOPS and UI

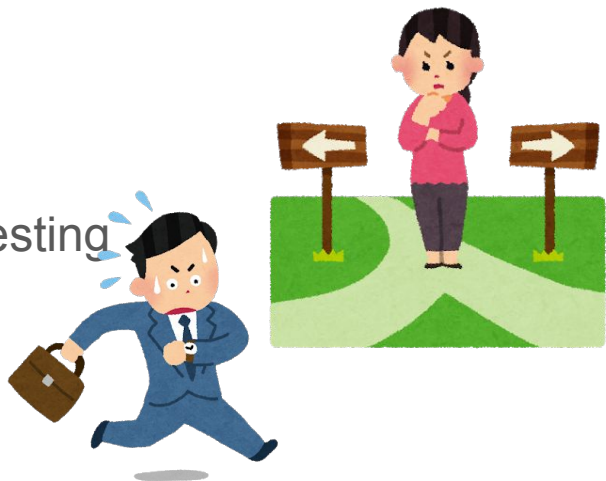
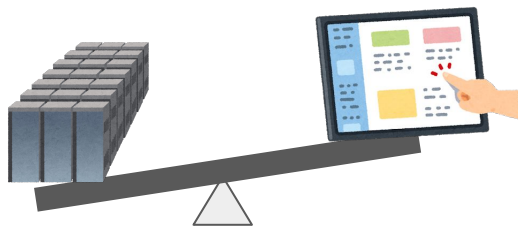


image-based process VM can help



2. background

challenges in scientific computing (e.g. multi-agent simulations)

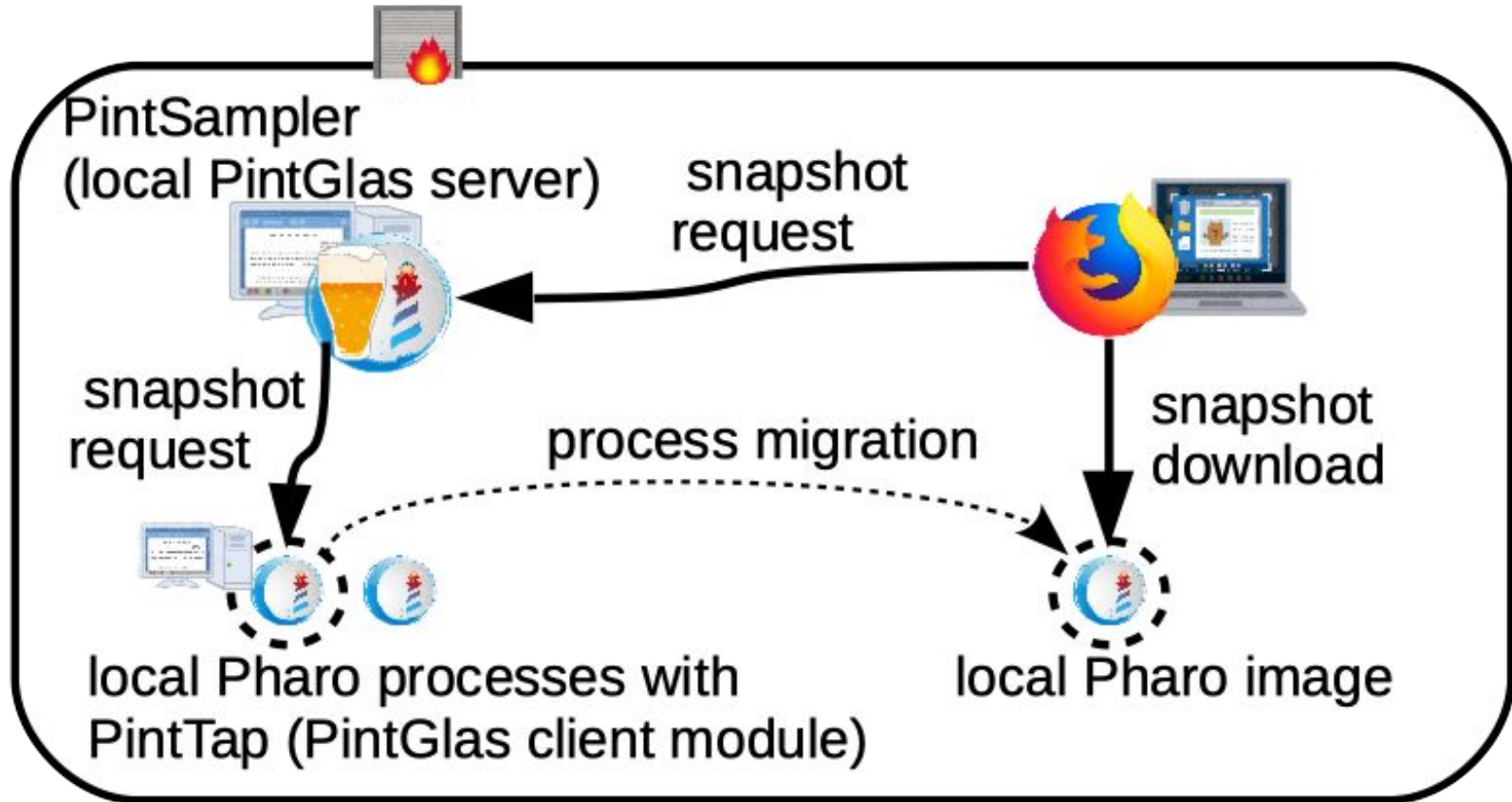
- exploratory
 - write once, run once
 - no detailed plan, no systematic testing
 - hard to estimate computing time
- diverse architecture
 - supercomputers to laptops
 - trade-offs between FLOPS and UI



Process migration can help

design

current prototype



Final configuration

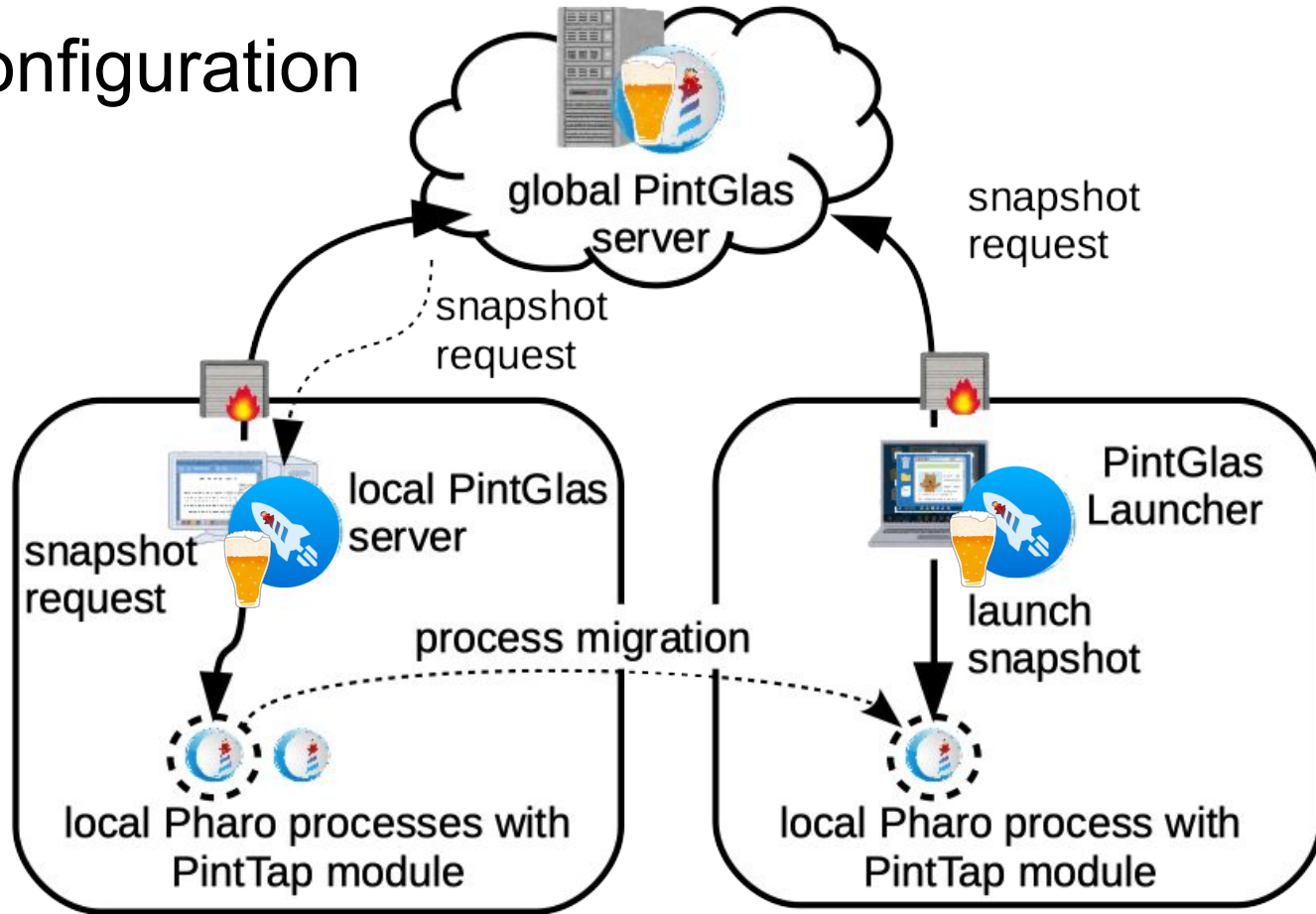


image metadata

- glas-id: "22043def4440bd72a8fa99a6fdf72f6a" (32 chars hash string)
- version: [0, 0, 1]
- hostname: "deutsch.local"
- path: "/Users/tomohiro/Pharo/images/ViennaTalk-7/"
- image name"ViennaTalk-7"
- date: "2019-08-19T12:53:17.657011+09:00"
- size: 31542872
- image-id: "6b707e7d2ab3bc273c6bdc0d2bac6a785b300fbf-56ef-61c1-1133"

For versioning, a local pharo process appends to image-id random 4 letters with a hyphen prefix at every snapshot.

image contents

- .image
- .changes
- .sources
- meta-inf.ston
- pharo.version
- pharo-local/*
 - including epicea files and iceberg repos.

Related work

- organizing exploratory process
 - Jupyter Notebook
 - ActivePapers
 - Roassal
- sharing data
 - IPFS
- launching process
 - TaskIt
 - PharoLauncher



todos

todos and summary

PintGlas is still at the early prototyping stage.

a pile of todos

1. user authentication
2. credential information removal
3. PharoLauncher integration
4. UI for image versions
5. local server ↔ global server
6. less impact on snapshot taking
7. periodic snapshot taking



<https://github.com/tomooda/PintGlas>